



**The Association for
Women in Communications
Detroit Chapter**

Read Any Good Faces Lately?
The Ancient Art of Face Reading

Face reading has been practiced for 3,000 years, and has been scientifically validated to 92% accuracy. The human face is a living personality profile of its owner. Every facial feature, line and crevice provides insights. Learn the history of face reading and how to gauge the importance of a facial trait. Learn the importance of size, placement, and scale to the face. Learn facial traits that you can begin to read immediately. Speaker Lin Klaassen will take questions and read random faces from the audience. **Bring a mirror for your personal observations.**



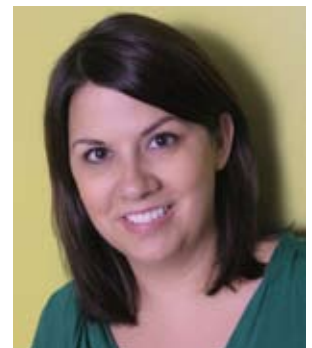
Lin Klaassen is considered one of the world's top experts in the field of face reading, an ancient science practiced by visionaries such as Aristotle and Da Vinci that correlates facial features to character traits. She has been lecturing internationally for more than 21 years; she presents workshops and serves as a jury, business, relationship, and poker consultant. She has appeared on *FOX TV* or *CBC Canada*. She has been featured in the *Detroit News* and *Detroit Free Press*.

When
Wednesday, November 16
6 p.m. Networking & Dinner
7:00 p.m. Program

Cost
\$25 AWC Member
\$35 Nonmember
Ticket price includes a light dinner

Where
Stagecrafters/Baldwin Theatre
415 S. Lafayette, Royal Oak, MI
Located by W. 5th Street
Parking structure located at 5th & Lafayette.

The host for the evening: Lesley Renee Braden has performed in more than two dozen commercials, voiceovers and films including Kevin Smith's film *Dogma*. Lesley graduated from the famed Second City Conservatory (Detroit) in 2000 and in the same year joined improv/sketch comedy group Motor City Improv. In 2001, Lesley earned her Actor's Equity Association (AEA) card during the nine-month run of Jeff Daniel's show, "The Tropical Pickle." Lesley has written and performed in seven sketch comedy shows and is currently a resident cast member of GO Comedy! Improv Theater in Ferndale Michigan where she continues to write and perform regularly.



Register Today!

Online: www.womcomdetroit.org • **Email:** info@womcomdetroit.org • **Phone:** (866) 385-1784 •

Mail: Form and check made out to Women in Communications of Detroit; send to address below.

Name: _____

Address: _____

Phone: _____ Email: _____

_____ AWC member @ \$25 each

_____ Nonmember @ \$35 each

Mail: AWC Detroit Chapter, PO Box 1288, Royal Oak, MI 48068-1288 • **Fax:** (248) 369-0622

Web site: www.womcomdetroit.org